



# Academic Training Program 2025

# Integrating STEAM in the English Classroom: Strategies for Engaging 21st-Century Learners.



Ana Laura Martínez Vázquez

As the demand for 21st-century skills grows, educators are tasked with preparing students for an increasingly interdisciplinary and innovation-driven world. This talk explores how English language teachers can incorporate Science, Technology, Engineering, Arts, and Mathematics (STEAM) principles into their lessons to enhance student engagement and learning outcomes. Through practical examples, attendees will learn how to design activities that combine language skills with critical thinking, creativity, and problem-solving. The session will also highlight methods for fostering collaboration and inquiry-based learning in ways that align with English language learning objectives. Whether working with younger students or adults, participants will leave with actionable strategies to create a more dynamic, cross-disciplinary learning environment that prepares learners to thrive in a globalized, STEAM-focused future.



| Type of course   | Length   | Requirements  |
|--|--|---|
| <ul style="list-style-type: none"><li>• Workshop</li><li>• Available online and onsite</li></ul> | <ul style="list-style-type: none"><li>• 2 to 2.5 hours</li></ul> | <ul style="list-style-type: none"><li>• <b>Onsite mode.</b> A proper space for moving around, a classroom could be ideal. Internet connection.</li><li>• <b>Online mode.</b> Empreser ELT will provide the Zoom link for the session.</li></ul> |



# Leveraging AI to Tailor Learning: Creating and Adapting Activities for Diverse Student Needs.

In today's diverse classrooms, meeting the unique needs of each learner is more challenging—and essential—than ever. This talk explores the transformative potential of artificial intelligence (AI) in the English language classroom. Educators will discover how AI tools can assist in designing, personalizing, and adapting language learning activities to meet the varied proficiency levels, learning styles, and interests of students. From automated content generation to adaptive learning platforms, participants will gain insights into practical ways AI can help them save time while delivering more targeted instruction. The session will showcase how AI-driven insights can enhance student engagement,



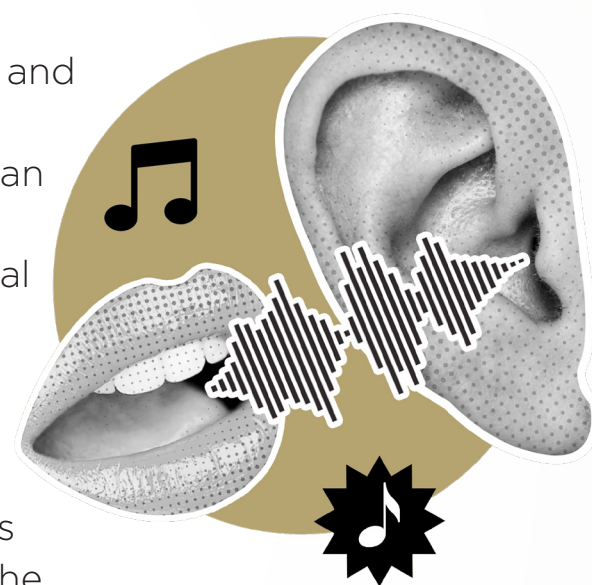
support differentiated instruction, and foster a more inclusive, responsive learning environment. Teachers will leave equipped with strategies to integrate AI meaningfully into their practice, maximizing both teacher and student success in the modern classroom.

| Type of course   | Length   | Requirements  |
|--|--|---|
| <ul style="list-style-type: none"><li>• Workshop</li><li>• Available online and onsite</li></ul> | <ul style="list-style-type: none"><li>• 2 to 2.5 hours</li></ul> | <ul style="list-style-type: none"><li>• <b>Onsite mode.</b> A proper space for moving around, a classroom could be ideal. Internet connection.</li><li>• <b>Online mode.</b> Empreser ELT will provide the Zoom link for the session.</li></ul> |

# Enhancing Speaking and Listening Skills for Today's Learners: Modern Approaches for the English Classroom.



In an era of rapid technological advancement and evolving communication styles, developing speaking and listening skills is more critical than ever for today's learners. This talk focuses on innovative strategies for fostering effective oral communication and active listening in the English language classroom. Participants will explore how to leverage digital tools, interactive activities, and real-world contexts to engage students in authentic conversations and enhance their listening comprehension. The session will cover techniques for creating dynamic, student-centered environments that encourage participation, build confidence, and promote meaningful communication. Teachers will also learn how to address common challenges, such as increasing student motivation and overcoming speaking anxiety, while ensuring that activities align with learning objectives. By the end of the talk, attendees will leave with a toolkit of practical, contemporary methods to improve speaking and listening skills in today's diverse and tech-savvy classrooms.



| Type of course   | Length   | Requirements  |
|--|--|---|
| <ul style="list-style-type: none"><li>• Workshop</li><li>• Available online and onsite</li></ul> | <ul style="list-style-type: none"><li>• 2 to 2.5 hours</li></ul> | <ul style="list-style-type: none"><li>• <b>Onsite mode.</b> A proper space for moving around, a classroom could be ideal. Internet connection.</li><li>• <b>Online mode.</b> Empreser ELT will provide the Zoom link for the session.</li></ul> |





Ana Pineda Mancilla

# AI-Powered Solutions: Crafting and Adapting Effective Teaching Materials for English Language Instruction.

As technology transforms education, artificial intelligence (AI) offers powerful tools to enhance the effectiveness of teaching materials for English language instruction. This talk will explore how educators can harness AI to design, customize, and adapt instructional resources to meet the diverse needs of learners. Participants will learn about AI-driven tools that streamline the creation of engaging and level-appropriate content, from vocabulary exercises to interactive reading and listening materials. The session will also cover how AI can be used to analyze student



performance data and personalize learning pathways, ensuring that instructional materials address individual strengths and areas for improvement. Through practical demonstrations, educators will discover how AI can save time while enhancing the quality and relevance of their teaching resources. Attendees will leave equipped with actionable insights and strategies for integrating AI into their material creation process, ultimately leading to more effective and personalized learning experiences.

| Type of course   | Length   | Requirements  |
|--|--|---|
| <ul style="list-style-type: none"><li>• Workshop</li><li>• Available online and onsite</li></ul> | <ul style="list-style-type: none"><li>• 2 to 2.5 hours</li></ul> | <ul style="list-style-type: none"><li>• <b>Onsite mode.</b> A proper space for moving around, a classroom could be ideal. Internet connection.</li><li>• <b>Online mode.</b> Empreser ELT will provide the Zoom link for the session.</li></ul> |

# Using Video in the Classroom: To Play or Not to Play?



Incorporating video into the classroom can be a powerful tool for engaging students and enhancing learning, but its effectiveness often hinges on how and when it is used. This talk, "Using Video in the Classroom: To Play or Not to Play?" will delve into the strategic use of video as an educational resource. Participants will explore the benefits and potential pitfalls of integrating video content into



lessons, including how to select appropriate materials, align videos with learning objectives, and utilize multimedia to support various learning styles. The session will offer practical guidelines for making informed decisions about when video can enhance instruction and when it might detract from learning goals. Attendees will also learn about best practices for incorporating video in a way that maximizes student engagement and comprehension. By the end of the talk, educators will have a clearer understanding of how to effectively use video as a teaching tool, ensuring that their media choices contribute positively to the learning experience.

| Type of course   | Length   | Requirements  |
|--|--|---|
| <ul style="list-style-type: none"><li>• Workshop</li><li>• Available online and onsite</li></ul> | <ul style="list-style-type: none"><li>• 2 to 2.5 hours</li></ul> | <ul style="list-style-type: none"><li>• <b>Onsite mode.</b> A proper space for moving around, a classroom could be ideal. Internet connection.</li><li>• <b>Online mode.</b> Empreser ELT will provide the Zoom link for the session.</li></ul> |



Lucero Aguilar

# Teaching Writing: A Foolproof Guide to Student Success.

Effective writing instruction is crucial for student success, yet many educators struggle to find a consistent, reliable approach. This talk provides educators with a comprehensive framework for teaching writing that is both practical and effective. Participants will explore evidence-based strategies and structured guidelines designed to enhance students' writing skills across various genres and proficiency levels. The session will cover essential elements of writing instruction, including curriculum design, feedback techniques, and strategies for fostering creativity and critical thinking. Attendees will also learn how to create a supportive writing environment that encourages revision and improvement. By integrating these foolproof methods into their practice, educators will be equipped to guide their students toward writing proficiency and confidence, ensuring greater success in their academic and future endeavors.



| Type of course   | Length   | Requirements  |
|--|--|---|
| <ul style="list-style-type: none"><li>• Workshop</li><li>• Available online and onsite</li></ul> | <ul style="list-style-type: none"><li>• 2 to 2.5 hours</li></ul> | <ul style="list-style-type: none"><li>• <b>Onsite mode.</b> A proper space for moving around, a classroom could be ideal. Internet connection.</li><li>• <b>Online mode.</b> Empreser ELT will provide the Zoom link for the session.</li></ul> |



# Teaching Better Pronunciation to Empower Students in a Changing World.

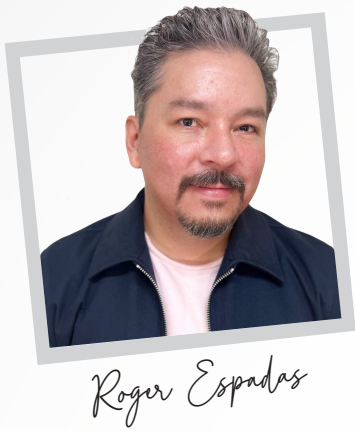


In today's globalized world, clear and effective pronunciation is more important than ever for successful communication. This talk will provide educators with innovative techniques and strategies to enhance pronunciation instruction in the English language classroom. Participants will explore practical approaches to helping students develop accurate pronunciation skills that improve their intelligibility and confidence in diverse contexts. The session will cover a range of methods, including the use of phonetic tools, technology, and interactive exercises designed to address common pronunciation challenges. Attendees will learn how to integrate these techniques into their teaching to better support students in navigating a multilingual world. By the end of the talk, educators will have actionable insights and tools to empower their students with the pronunciation skills needed to excel in their personal and professional lives.



| Type of course   | Length   | Requirements  |
|--|--|---|
| <ul style="list-style-type: none"><li>• Workshop</li><li>• Available online and onsite</li></ul> | <ul style="list-style-type: none"><li>• 2 to 2.5 hours</li></ul> | <ul style="list-style-type: none"><li>• <b>Onsite mode.</b> A proper space for moving around, a classroom could be ideal. Internet connection.</li><li>• <b>Online mode.</b> Empreser ELT will provide the Zoom link for the session.</li></ul> |





# Buzz to the Top: Mastering Spelling Bee Strategies in This Workshop.

Spelling bees are a thrilling way to boost students' language skills and confidence, but achieving top results requires more than just memorizing words. This workshop is designed to equip educators and students with effective strategies for excelling in spelling competitions. Participants will explore proven techniques for word study, mnemonic devices, and pattern recognition that can significantly enhance spelling accuracy and retention. The session will also cover strategies for managing competition stress and building mental resilience, ensuring students perform their best under pressure. Through interactive activities and expert tips, attendees

will learn how to create a targeted preparation plan that maximizes student success. By the end of the workshop, participants will have a toolkit of practical strategies to help their students rise to the top of the spelling bee ranks with confidence and skill.



| Type of course  | Length   | Requirements   |
|---|--|--|
| <ul style="list-style-type: none"> <li>Workshop</li> <li>Available online and onsite</li> </ul> | <ul style="list-style-type: none"> <li>2 to 2.5 hours</li> </ul> | <ul style="list-style-type: none"> <li><b>Onsite mode.</b> A proper space for moving around, a classroom could be ideal. Internet connection.</li> <li><b>Online mode.</b> Empreser ELT will provide the Zoom link for the session.</li> </ul> |



The Leading ELT Distributor  
in Latin America

Our Partners:



NE - Build & Grow



 /EmpreserElt •  /Empreser\_elt • [www.empreser-elt.com](http://www.empreser-elt.com)

01 800 8305 979 • 55 5128 4830





Ana Laura Martínez Vázquez  
Regional ELT Academic Director  
and Portfolio Manager

[alaura.martinez@empreser-elt.com](mailto:alaura.martinez@empreser-elt.com)

